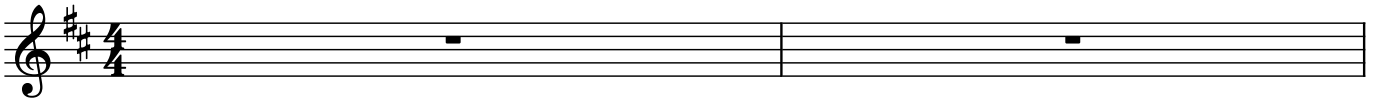


2/4 Competition Set (G5)

Date: 10.03.2023

Arr. FCSP PD

♩ = 86



Terribus



Mairis Wedding

21

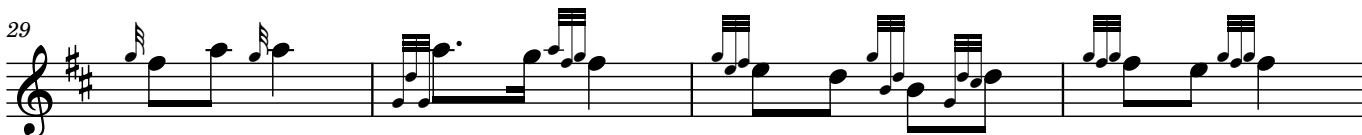


Musical staff 1 for 'Mairis Wedding', starting at measure 21. It features a treble clef, a key signature of two sharps (F# and C#), and a 2/4 time signature. The melody consists of eighth and sixteenth notes with various rests and accents.



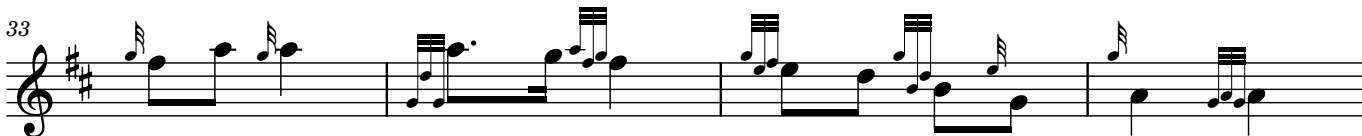
Musical staff 2 for 'Mairis Wedding', continuing from measure 25. It features a treble clef, a key signature of two sharps (F# and C#), and a 2/4 time signature. The melody consists of eighth and sixteenth notes with various rests and accents.

29

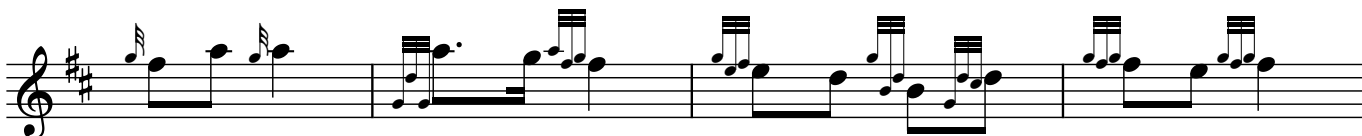


Musical staff 3 for 'Mairis Wedding', starting at measure 29. It features a treble clef, a key signature of two sharps (F# and C#), and a 2/4 time signature. The melody consists of eighth and sixteenth notes with various rests and accents.

33



Musical staff 4 for 'Mairis Wedding', starting at measure 33. It features a treble clef, a key signature of two sharps (F# and C#), and a 2/4 time signature. The melody consists of eighth and sixteenth notes with various rests and accents.



Musical staff 5 for 'Mairis Wedding', continuing from measure 37. It features a treble clef, a key signature of two sharps (F# and C#), and a 2/4 time signature. The melody consists of eighth and sixteenth notes with various rests and accents.

41



Musical staff 6 for 'Mairis Wedding', starting at measure 41. It features a treble clef, a key signature of two sharps (F# and C#), and a 2/4 time signature. The melody consists of eighth and sixteenth notes with various rests and accents.

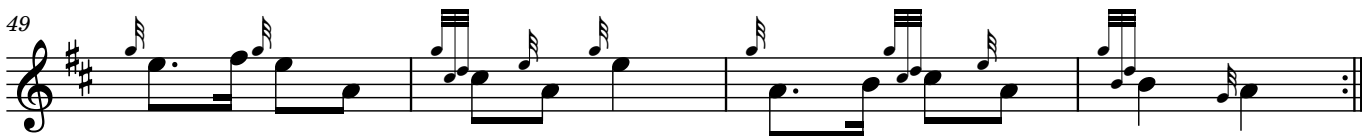
High Road to Gairloch

45



Musical staff 1 for 'High Road to Gairloch', starting at measure 45. It features a treble clef, a key signature of two sharps (F# and C#), and a 2/4 time signature. The melody consists of eighth and sixteenth notes with various rests and accents.

49



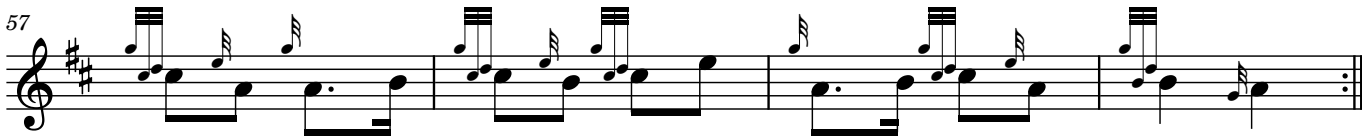
Musical staff 2 for 'High Road to Gairloch', starting at measure 49. It features a treble clef, a key signature of two sharps (F# and C#), and a 2/4 time signature. The melody consists of eighth and sixteenth notes with various rests and accents.

53



Musical staff 3 for 'High Road to Gairloch', starting at measure 53. It features a treble clef, a key signature of two sharps (F# and C#), and a 2/4 time signature. The melody consists of eighth and sixteenth notes with various rests and accents.

57



Musical staff 4 for 'High Road to Gairloch', starting at measure 57. It features a treble clef, a key signature of two sharps (F# and C#), and a 2/4 time signature. The melody consists of eighth and sixteenth notes with various rests and accents.